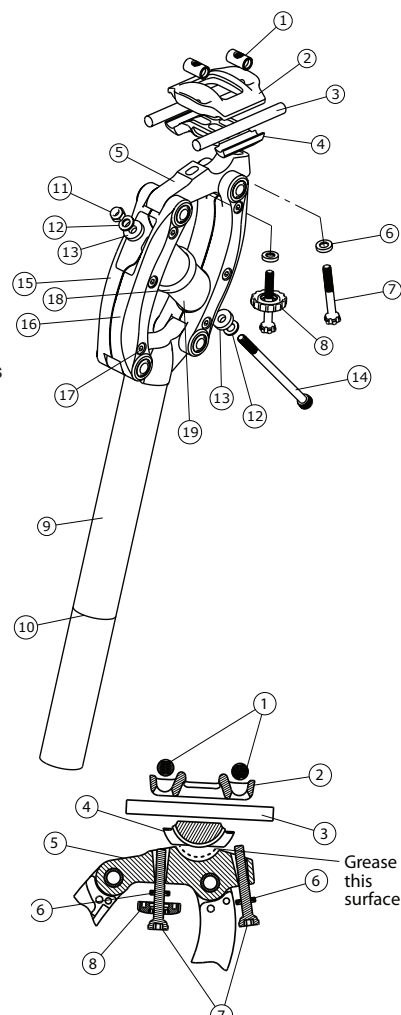


THUDBUSTER®

THUDBUSTER LT INSTRUCTIONS

INITIAL INSTALLATION

- Note your current saddle height and fore/aft position to duplicate it with the Thudbuster.
- Remove your current saddle and seatpost.
- Confirm your new Thudbuster seatpost (or shim) diameter is the same as your old seatpost. (Thudbusters are available in six direct fit sizes between 25.4 and 31.6 mm.)
- Grease the shim (if applicable) and seat pillar before installing. DO NOT lubricate seat tubes of Carbon frames (unless specified by the manufacturer).
- Insert the shim (if applicable) into the bicycle frame with the split aligned with the split in the seat-tube.
- Install the Thudbuster into the bicycle frame to approximately the correct height with the extension marks on seat pillar facing the front of the bicycle.
- Loosen the two saddle clamp bolts (front and rear) until the threads are barely engaging the barrel nuts (1 or 2 threads). Be sure grease is applied to the interface between the lower clamp and cradle.
- Place one rail of saddle in position between the upper and lower clamps. Then rotate saddle so the other rail slips over the far edge of the upper clamp and into position in the rail grooves of the lower clamp.
- Begin to tighten the front and rear clamp bolts. The saddle tilt adjustment is controlled by these two bolts. Check that the saddle tilt and fore/aft position of the saddle are correct before final tightening. The front bolt can be adjusted by hand or hex wrench, but the rear bolt must be tightened to 60 in*lb (6.8 N*m) with a 4 mm hex wrench. Be sure all the components of the clamp are installed as shown in section view. (Figure 1)
- Adjust the saddle height if necessary



- | | |
|----------------------------------|-----------------------|
| ① Barrel nut (2) | ⑪ Lock nut |
| ② Upper clamp | ⑫ Steel washer (2) |
| ③ Saddle rails | ⑬ Nylon washer (2) |
| ④ Lower clamp | ⑭ Skewer bolt |
| ⑤ Cradle | ⑮ Arm - LT, right (2) |
| ⑥ Spherical washer (2) | ⑯ Arm - LT, left (2) |
| ⑦ Clamp bolt (2) | ⑰ Arm bolt, 20mm (6) |
| ⑧ Adjustment knob | ⑱ Coupling washer |
| ⑨ Seat pillar | ⑲ Elastomer - LT (2) |
| ⑩ Minimum insertion line (100mm) | |

NOTICE! The Thudbuster must be set-up with appropriate elastomer before riding (See below). Maximum allowable rider weight is 250 lb (115kg).

POSSIBLE COMBINATIONS (Recommended in Bold)			
Elastomer 1	Elastomer 2	lb. range	kg. range
#1 (XSoft)	#1 (XSoft)	<100	<45
#1 (XSoft)	#3 (Soft)	100-120	45-54
#1 (XSoft)	#5 (Medium)		
#1 (XSoft)	#7 (Firm)		
#3 (Soft)	#3 (Soft)	120-140	54-64
#1 (XSoft)	#9 (XFirm)		
#3 (Soft)	#5 (Medium)	140-165	64-75
#3 (Soft)	#7 (Firm)		
#5 (Medium)	#5 (Medium)	165-190	75-86
#3 (Soft)	#9 (XFirm)		
#5 (Medium)	#7 (Firm)	190-215	89-98
#7 (Firm)	#7 (Firm)	215-240	98-109
#5 (Medium)	#9 (XFirm)	240-250 (post limit)	109-113 (post limit)
#7 (Firm)	#9 (XFirm)		
#9 (XFirm)	#9 (XFirm)		

SELECTING ELASTOMERS

The Thudbuster LT can be tuned for different weight riders and riding styles by combining the proper elastomers (spring rate) with the proper amount of preload (travel initiation load). Start with the softest elastomer recommended for a given rider weight. The Thudbuster LT is shipped with 2 medium and 1 each of soft and firm elastomers. Extra soft and firm elastomers are available separately from www.canecreek.com. You may desire to increase the stiffness by using firmer elastomers. Never use softer elastomers than those recommended for your weight.

CHANGING ELASTOMER

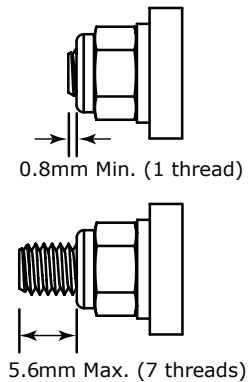
- Using an 8 mm socket wrench and a 4 mm hex wrench, loosen the locknut completely.
- Push the saddle forward slightly to remove upper white, nylon washer and steel washer.
- Remove the skewer bolt, keeping the lower nylon washer and steel washer on the skewer.
- Push the saddle further forward to remove the elastomers and coupling washer.
- Select elastomers as required. When mixing different spring rate elastomers, the order does not matter.
- Grease the skewer bolt shaft and the top and bottom of each elastomer.
- Place the coupling washer between the elastomers and place them into the assembly.
- Insert the skewer bolt through the lowest elastomer and the coupling washer.
- Push the saddle rearward while pushing the skewer through the top elastomer and hole.
- Re-install the nylon washer, steel washer and the locknut. **DO NOT TIGHTEN.**
- Install the locknut so that one full thread is exposed beyond the locknut (figure 2). Additional tightening will add preload to the assembly. (See page 2).

PRELOAD ADJUSTMENT

The Skewer and locknut can be used to add additional preload to the assembly on the Thudbuster LT. While there must be at least one thread showing beyond the lock nut, additional turns of the nut can add preload. Additional preload will increase the force required to initiate travel and will minimize the suspension travel for small bumps. Refer the table and illustration below to set up preload. The values in the table are the thread length beyond the end of the locknut to achieve the preloads in the column heading for a given elastomer spring combination.

NOTICE! DO NOT exceed 100 pounds (45 kg) preload or 7 threads exposed!

	Additional Preload			
	Minimum Elastomer Recommendation			
	25 lbs (11 kg)	50 lbs (23 kg)	75lbs (34 kg)	100 lbs (45 kg)
#3 #3	0.06" (1.6 mm)	0.14" (3.5 mm)	0.22" (5.6 mm)	----
#5 #5	0.04" (1.0 mm)	0.08" (2.1 mm)	0.13" (3.3 mm)	0.19" (4.7 mm)
#7 #7	0.03" (0.8 mm)	0.07" (1.7 mm)	0.11" (2.7 mm)	0.15" (3.8 mm)



MAINTENANCE

- The pivot washers should occasionally be lubricated with a light oil.
- The skewer and elastomers must be lubricated periodically with grease. Apply grease to the shaft of the skewer and to the ends of the elastomers. The elastomers must be removed and reassembled as explained in the changing elastomers section of the instructions.

NOTICE! If you ride in muddy conditions, using either a fender or the Cane Creek Thudglove neoprene boot will protect the pivots and extend the life of your seatpost.

NOTICE! Thudbuster seatposts are designed to absorb small bumps only. You should still stand up when encountering large obstacles on the road or trail.

WARRANTY

Thudbuster seatposts are warranted against defects in materials or workmanship for one year from the date of purchase. This warranty applies to the original owner only. At their discretion, Cane Creek Cycling Components will repair or replace any defective seatpost with the same or comparable model. This warranty is void if the seatpost is damaged as a result of abuse, alterations, modifications, improper adjustment, lack of maintenance, crashes, or other conditions judged by Cane Creek Components to be abnormal, excessive, or improper. It is mandatory that a Return Authorization Number (RA#) is received (by calling Cane Creek) before any return is made. Additionally, a dated Proof of Purchase must accompany the seatpost when returned.

Cane Creek Thudbuster LT Bushing Replacement Instructions



Fig. 1 - Remove skewer and elastomers.

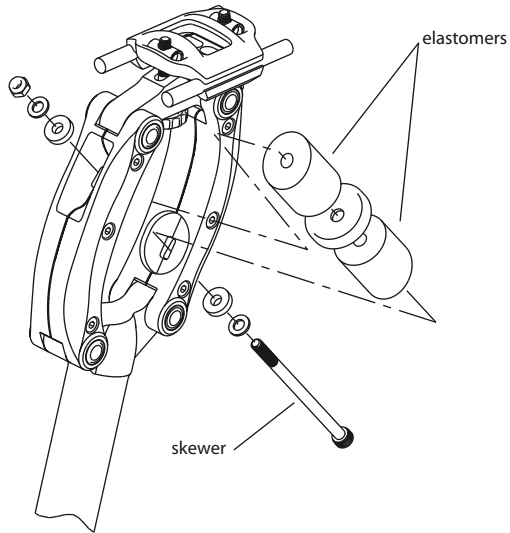


Fig.2 - Remove bolts from arms.

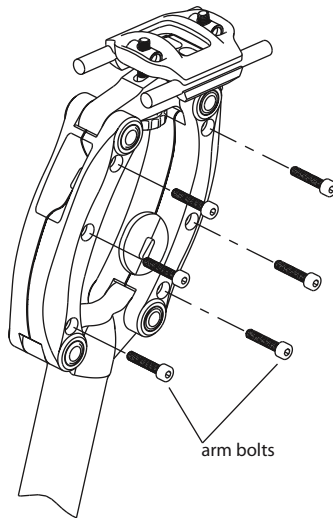


Fig. 3 - Remove arms and pivot shims from post (saddle clamp may need to be loosened)

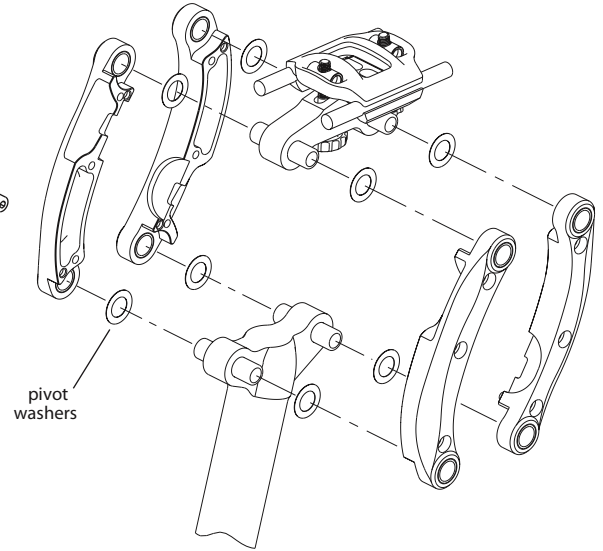


Fig. 4 - Use bushing replacement tools as shown to replace bushings on each arm.

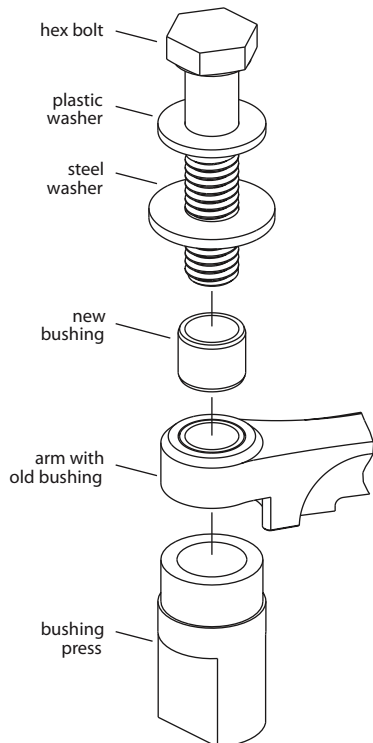


Fig. 5 - Tighten bolt on replacement tool to push old bushing out and new bushing into place.

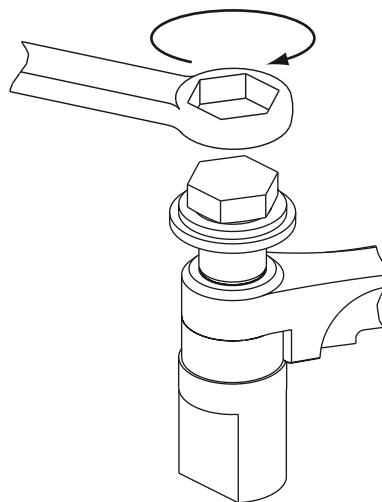


Fig. 6 - Replace all components in reverse order. Torque arm bolts to 3.4 Nm (30 in-lb).

